



EXPLORATION OF STAINED GLASS IN LAWANG SEWU AS INSPIRATION FOR EMBROIDERY MOTIFS REVERSE APPLIQUE ON VEST

I'anatul Maulaya¹⁾, Yuhri Inang Prihatina²⁾

^{1,2} Surabaya State University.

¹⁾ Email: ianatulmaulaya.21034@mhs.unesa.ac.id, 0895622258646

²⁾ Email: Inangyuhri@yahoo.com, 085730092999

Abstract

Stained Glass in Lawang Sewu is one of the stained glass ornaments found in one of Indonesia's cultural heritage buildings, Lawang Sewu. The shape of stained glass in Lawang Sewu has a beautiful and distinctive motif that is the inspiration for embroidery motifs. This study aims to determine 1) the process of exploring stained glass in Lawang Sewu as an inspiration for reverse applique embroidery motifs on vests, and 2) the results of exploration of stained glass in Lawang Sewu as inspiration for reverse applique embroidery motifs on vests. The type of research is design development research. The research method uses the Double Diamond Model including four stages: Discover, searching for and collecting information about Kaca Patri Lawang Sewu, Define, taking important priorities into one on the moodboard to create a Reverse Applique embroidery motif design on a vest, Develop, realizing the stained glass in Lawang Sewu motif in the form of reverse applique embroidery and sewing it in the form of a vest, Deliver, the final stage, namely the prototype is selected and approved, and the product is completed by testing the feasibility of the work or product is completed. The data collection instrument in the process uses an observation sheet to the Expert and is approved by the supervising lecturer. The data analysis technique uses a qualitative descriptive analysis technique using the mean or average. The results are reviewed from 5 aspects, namely the creativity and originality aspects, the embroidery motif pattern structure aspect, the color aspect, the application of techniques, and the functionality aspect. The aspect with the highest mean is the embroidery motif pattern structure aspect, with a mean of 5 (very good). While the aspect with the lowest results is the functionality aspect, which is 4.4 (very good). By getting a very good response, this product is expected to be an inspiration for exploration and innovation in the fashion world.

Keywords: *Stained Glass in Lawang Sewu, Embroidery, Reverse Applique, Vest*



This work is licensed under a [CC-BY-NC](https://creativecommons.org/licenses/by-nc/4.0/)

INTRODUCTION

Lawang Sewu is one of the historical building sites a legacy of the Dutch colonial government located in the center of the capital of Java Central,

Semarang. The details of the Lawang Sewu building have unique characteristics and its own unique beauty. Lawang Sewu has another iconic spot, it is the stained glass located in the central part of the Lawang Sewu building. This pattern makes Lawang Sewu look like it has a touch of European style the building because stained glass was previously synonymous with churches there. There are many types of stained glass in Lawang Sewu, but the iconic ones are: on the stained glass located on the 2nd floor of the main building Stained glass on Lawang Sewu has patterns and bright colors with a combination of shapes geometry and realistic shapes and have their own meaning in each part the pattern, so that the beauty of this stained glass motif creates a special attraction (Putri, DM, & Anas, B. (2012)). The potential beauty of stained glass in Lawang is the inspiration for creating embroidery motifs by applying techniques reverse applique on vest.

Lawang Sewu stained glass motifs are distilled using Ibis Paint X. Then realized by applying border techniques reverse applique on a plot cloth. According to the The Great Dictionary of the Indonesian Language (2012:207) embroidery is a decoration from threads sewn onto fabric, or also called "embroidery", and it is also explained that embroidery is the same as stitch. *Reverse Applique* is a method of fabric manipulation in which the design is cut from the top layer of the fabric, then a layer is added underneath (Kh Ahmed, Omnia (2019)).

In this research, the implementation media will focus more on items clothing, namely vests. This is because vests are currently very popular among society, especially women. In addition, vests can be applied and combined with a variety of fashion items, from Muslim clothes to midi dresses, from long-sleeved to short-sleeved clothing. Vests are also very suitable used in all conditions, can be used in formal and non-formal occasions.

Therefore, this exploration process will include the motif stylization process. Lawang Sewu stained glass has several new designs which will be further developed. embroidered on fabric that has been adjusted to the pattern, then sewn to form a shape vest.

RESEARCH METHODES

This research uses a research method Double Diamond Model. Method Double Diamond Model is to present the process of researching a problems more broadly or in depth (divergent/branched thinking) and take some focused action (thoughts that convergent/centralized). This method includes 4 stages, namely Discover, Devine, Develop, and Deliver.

Discover

The first stage is Discover, a information about the exploration of stained glass motifs in Lawang Sewu through journals in internet, books, and direct observation by visiting the location, Lawang Sewu. The design concept that has been described above is then this stage the researcher collects visualized in the form of moodboard.



Figure 1. Moodboard

Define

Second stage is define, it is the stage of determining the results of the ideas that have been obtained from the data grouping process in the previous stage and develop it by stylizing the motifs found in stained glass at Lawang Sewu and

then arranged them into six new motifs. The six motifs then applied to the vest design to produce nine designs of applying motifs to vests.



Figure 2. Motif design

After that, from the nine designs by filling out the observation sheet, then the design with the highest average will be one design is chosen to be realized. This selection is made by experts by filling out the questionnaire.

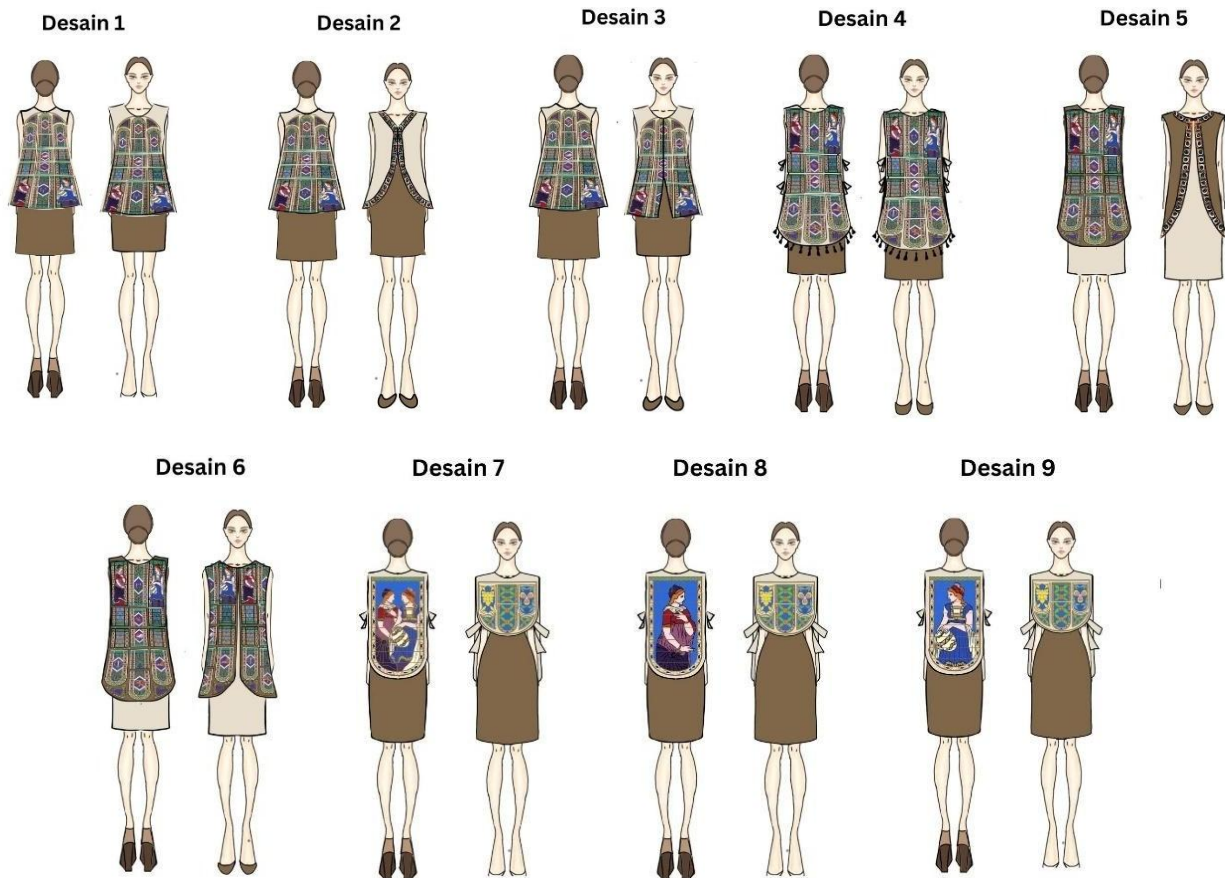


Figure 3. Design Results

After creating several vest designs with uniqueness and beauty respectively, the next step is selecting the design that realized in the amount of only one design. After the selection by experts was carried out, design 7 was chosen.

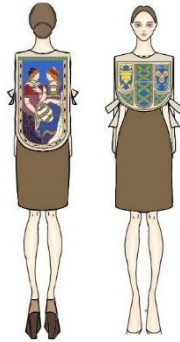


Figure 4. Selected Design

Develop

The third stage is develop, namely the prototype stage which is starting to be developed, tested, reviewed, and refined. The activities carried out by researchers on This stage is to realize one of the vest designs using cotton fabric, hemp and holographic fabric then apply embroidery motifs reverse applique on the area to be embroidered, then the final step is to sew the vest.



Figure 5. Work Process

Deliver

The final stage is deliver, it is the stage of collecting criticism and input, as well as prototypes that will be selected and approved, then the product completed by testing the suitability of the work or product. At this stage data analysis was carried out from the results of the Stained Glass Exploration in Lawang Sewu as an Inspiration for Embroidery Motifs Reverse Applique on Vest.

RESULTS AND DISCUSSION

Stained Glass Motifs at Lawang Sewu which have been stylized and then arranged into a motif without eliminating the shape and characteristics of Stained Glass in Lawang Sewu. Then the motif was applied to the vest design. The motif was embroidered combined with reverse applique techniques. Technique Reverse that is facing each other or in opposite directions parallel to each other for creating an interesting visual rhythm in clothing (Alifa and Bernardo, 2021). By combining these two techniques, a unique motif shape is produced although the process requires great care. The sparkling colors in the finished motif are produced from the holographic fabric which attached by embroidery and the color is matched to the color on the motif. The disadvantage of this technique is the difficulty of conditioning the holographic fabric to prevent the wrinkles. Holographic fabric is thin and slippery. So, the results in some areas of the motif appear wrinkled and ballooning.



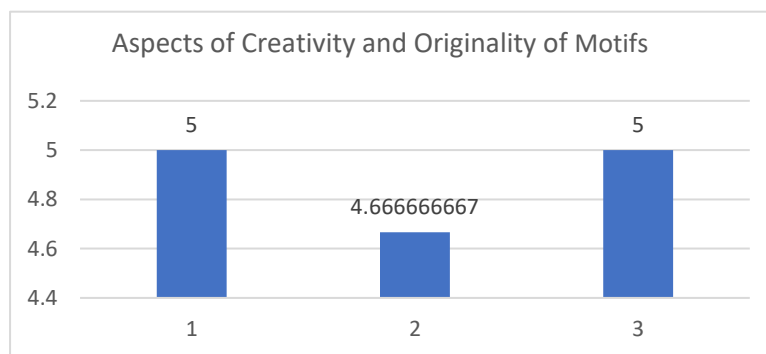
Figure 6. Finished Results



Figure 7. Finished Result When Used

Next stage is data collection to provide an assessment on the finished product. This assessment was carried out by three observers who had experts in their fields. The assessment is reviewed from 5 aspects, namely, creativity and originality of the work, structural aspects of the embroidery motif pattern, source of ideas for stained glass in Lawang Sewu, color aspects, aspects of applying techniques in making glass motifs patri in Lawang Sewu on fashion, and functional aspects. Reviewed from the Aspect of Creativity and Originality of Motifs. After conducting an assessment by collecting data by observer, the assessment results of each aspect can be seen in the graph as follows:

Graph 1. Aspects of Creativity and Originality of Motifs

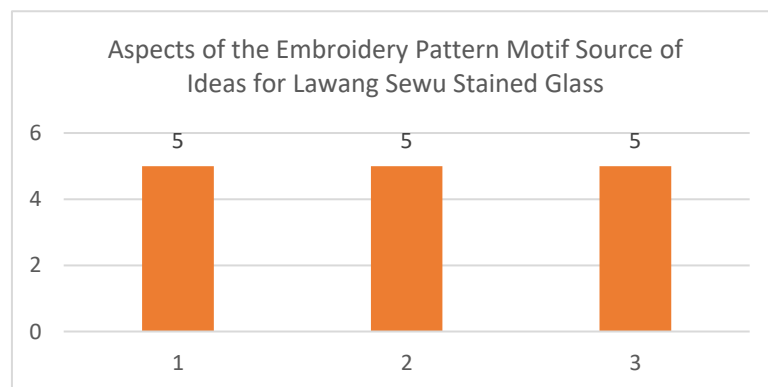


The results of data collection in the graph below are reviewed from the aspect Creativity and Originality of Lawang Sewu Stained Glass Motifs, which include 3 assessment aspects obtain mean/average, the results is: The chosen motif has uniqueness/characteristics according to the source of the idea for the stained glass Lawang Sewu : 5 (very good), The original motif of Lawang Sewu Stained Glass is distilled to suit the embroidery motif: 4.67 (very good), The motifs and techniques used produce unique characteristics fashion: 5 (very good). According to Johnson (2010) creative thinking is a habit from a mind trained by paying attention to intuition, bringing to life imagination, revealing new possibilities, opening up amazing point of view, and it generates ideas that unexpected. Originality is the ability to think in a way new or with unique

expressions, and the ability to produce unconventional thoughts rather than thoughts which is clearly known (Siswono, 2008).

Reviewed from the Structural Aspect of the Embroidery Pattern Motif Source of the Lawang Sewu Stained Glass Idea. The results of data collection in graph 4.2, reviewed from the Structural Aspect Embroidery Motif Pattern Source of Lawang Sewu Stained Glass Ideas, which includes 3 aspects assessment obtained mean/average results:

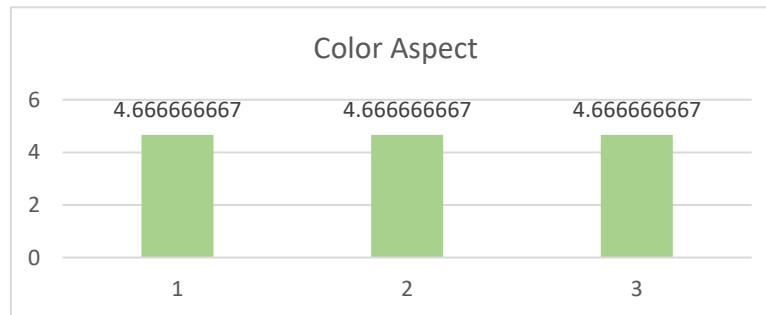
Graph 2. Structural Aspects of the Embroidery Pattern Motif Source of Ideas for Lawang Sewu Stained Glass



1. Selection of main ornaments according to the motif title: 5 (very good).
2. The selection of supporting ornaments creates harmony according to the theme: 5 (Very good).
3. The selection of ornaments to fill the empty area (embroidery stitches) enhances the beauty Lawang Sewu stained glass motif: 5 (very good).

According to Wuryani (2015:175), a pattern is a repetition of a unit, selected according to the applicable repeat pattern, so that it covers the entire the surface of the fabric or part of it according to the desired design. Units are motifs that are arranged according to the principles design, into a complete whole. Reviewed from the Color Aspect The results of data collection in graph 4.3, reviewed from the Color Aspect, which includes 3 aspects of assessment to obtain mean/average results:

Graph 3. Color Aspect

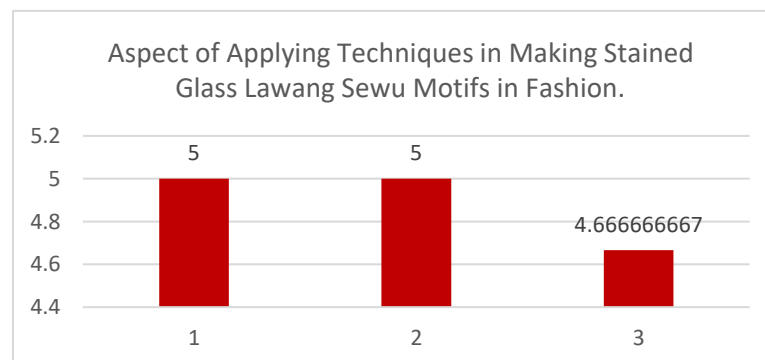


1. The colors chosen are in accordance with the source of the Lawang Sewu Stained Glass idea: 4.67 (very good).
2. The color combination chosen matches the clothing with the embroidery Lawang Sewu Stained Glass motif: 4.67 (very good).
3. The color of the Lawang Sewu Stained Glass motif is produced from holographic fabric in accordance with the characteristics of stained glass which is bright and shiny: 4.67 (Very good).

According to Nugroho, S. (2015), a work of art must have specialty, excellence, attraction, center of attention or center of view which is often called dominance. A work of art without dominance will feel bland, no excitement, no vitality, no center of attention so it is not interesting. Nugroho, S. (2015) mentions several types of good color composition, one of which is the arrangement of colors using low chroma intensity with one color dominant brilliant (maximum chroma). Low chroma color/color with low chroma intensity/low saturation colors, are colors colors that appear soft, faded, or dull, for example colors pastel. While maximum chroma is the colors that are very pure, saturated, and striking. These colors are at the outermost point of the spectrum color models such as the Munsell Color System or HSL, and do not mix with white, black, gray, or complementary colors. Example of color with maximum chroma are primary colors and secondary colors.

Reviewed from the Aspect of Applying Techniques in Making Stained Glass Lawang Sewu Motifs in Fashion. The results of data collection in the graph below, reviewed from the implementation aspect Lawang Sewu Stained Glass Technique in Clothing, which includes 3 aspects of assessment get mean/average results:

Graph 4. Aspect of Applying Techniques in Making Stained Glass Lawang Sewu Motifs in Fashion.



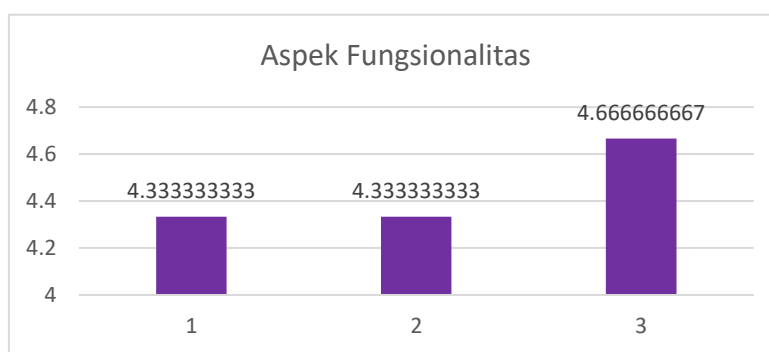
1. Application of embroidery techniques according to the source of the Lawang Stained Glass idea Sewu: 5 (very good).
2. Application of techniques reverse applique according to the source of the idea of Stained Glass Lawang Sewu: 5 (very good).
3. The combination of the selected techniques produces a shape-like appearance stained glass according to the source of the idea for Lawang Sewu Stained Glass: 4.67 (very good)

Assessment of the application of techniques in the creation of stained glass of Lawang Sewu motifs, includes the use of a combination of two techniques, namely embroidery and reverse applique. Embroidery is a technique for decorating fabric, which is made manually and by machine via computer made on cloth with embroidery needles and thread. The embroidery decorative technique is a decorative technique that most widely applied to ready-to-wear fashion and party wear (Fatminingrum & Yulistiana, 2022). Meanwhile, the reverse applique technique is a technique that combines two or more layers of fabric, the motif then stitched through the layers, either by hand or sewing

machine. One or more layers are then cut open around the edges motif to show the next layer. The edges can be left raw or reversed (Singer, 2013).

Reviewed from the Functional Aspect. The results of data collection in graph 4.5, reviewed from the Functionality Aspect, which includes 3 aspects of assessment to obtain mean/average results:

Graph 5. Functionality Aspects



1. Comfortable clothing to wear in daily activities: 4.3 (very good)
2. The fabric used matches the vest: 4.3 (very good)
3. The resulting vest gives an elegant impression user: 4.67 (very good).

According to Supriyono, (2019), functionality is the ability provision of functions that meet stated needs or implied. The functional aspect is assessed based on three points, namely comfort of the vest when worn, suitability of the vest material, and the finished result of vest.

Reviewed from the Overall Aspect. After all the data is obtained, the mean result is calculated each aspect reviewed, this product gets an indicator which is very good in all aspects. However, in every aspect still have a difference in mean results. The aspect with the highest mean is the structural aspect of the embroidery motif pattern, the source of the idea for Lawang Sewu Stained Glass with a mean of 5 (very good). This means that this product has a motif

with a good pattern structure, viewed from the placement of the selection main ornament, supporting ornament, and field filler ornament empty. Meanwhile, the aspect with the lowest results is the aspect functionality, namely 4.4 (very good). Points with a mean score The highest is the finished vest result, the finished vest result that is produced provides elegant impression on the wearer. Meanwhile, two points need to be improved again, namely comfort when used and the fabric chosen.

Graph 6. Overall Aspect



CONCLUSION

The conclusion from the exploration of Lawang Sewu stained glass as inspiration embroidery motifs reverse applique on the vest are as follows: The process of exploring Lawang Sewu stained glass as inspiration for embroidery motifs reverse applique on the vest has gone through several stages, namely determining theme, determine the source of ideas, create a moodboard, create a design motif design, the process of realizing embroidery motifs reverse applique with Stained Glass Lawang Sewu, to create it in the form of a vest in accordance with the design that has been selected. The finished result of exploring Lawang Sewu stained glass as inspiration for embroidery motifs reverse applique on vest get very good results reviewed based on several aspects of the research instrument that have been assessed by 3 observers, these aspects include the creativity aspect and the originality of the Lawang Sewu Stained Glass Motif, the structural aspects of the motif pattern aspects of the application of techniques in the creation of Lawang Sewu Stained Glass Motifs, and Functional aspects. Structural

aspects of embroidery motif patterns with sources of ideas Lawang Sewu Stained Glass obtained the highest mean, namely 5 (very good). Meanwhile, the functionality aspect obtained the lowest mean, namely 4.4. (very good). Despite getting very good results, this product has a drawback, namely the finished result is reverse applique embroidery with a stained glass motif. Lawang Sewu has a wrinkled appearance on its holographic fabric. This is due to the characteristics of hologram fabric which is thin and slippery, so that It is difficult to condition the holographic fabric so that it does not wrinkle.

REFERENCE

- Ahmed, O. K., & Elsayed, N. A. (2019). Fabric manipulation as a fashion inspiration source for children clothes. *International Design Journal*, 9(4), 79-91.
- Aulia, F., Salim, S., & Sulistiyowati, A. (2022). APPLICATION OF ELEGANT FASHION STYLE WITH LAWANG SEWU ARCHITECTURAL FORM IDEAS USING HANDMADE BATIK TECHNIQUE. *Canthing*, 8(1).
- Dewi, H. (2022). Press Release: Exploring the Historical Traces of Lawang Sewu Building Semarang. Accessed 2024 from: <https://www.kememparekraf.go.id/hasil-pencarian/siaran-pers-menggali-jejak-sejarah-gedung-lawang-sewu-semarang>
- Firmansyah, M. L., Wahyu, A. C., Alfianto, N., Wicaksono, M. P., Khoirunnisa, S. R., Anugraheni, S. K., ... & Pujiatmoko, A. (2024). A Study of Transitional Architectural Styles in the Lawang Sewu Building. *Journal Culture*, 3(1), 117- 126.
- Hasanah, N. A. (2019). TA: Kace Product Design Development (Chest Vest) Ponorogo's specialty with recycled water hyacinth (Case Study: Paguyuban Gembon Kiai Bulak) (Doctoral dissertation, Stikom Surabaya Institute of Business and Informatics).
- Hidayat, A. A. (2021). Developing research instruments & validity test-reliability. Health Books Publishing.
- Istiqomah, A. R. (2021). TRANSFORMATION OF PUTA DINO DECORATIVE VARIETY FORMS AS EMBROIDERED ORNAMENTS FOR BRIDAL

CLOTHES. In Prihatina / Journal of Fashion and Textile Design Unesa (Vol. 2).

Jacson, L. (2024). Summer Shopping Tip? Invest in the Suit Vest Set. Diakses 22 Mei 2024 dari <https://www.vogue.com/slideshow/suit-vests-for-women>

Kerdiati, N. L. K. R. (2022). A Review of Stained Glass as an Aesthetic Element in Buildings. Dasa Citta Design: E-Book Chapter Design, 112-129.

Khalil, R. W. (2023). Apparel Design for Plus-Size Females in Scope of Recycled Fabric Manipulation Techniques. International Design Journal, 13(2), 101-118.

Meilani, M. (2013). Color theory: applying the color wheel to fashion. Humanities 4, (1), 326-338.

Nugroho, S. (2015). Color management and design.

Oktaviani, U., Nafisah, S., Apriliyani, M. N., Susanti, E., & Pamungkas, M. D. (2019). Application of Stained Glass Ornaments to Casual Clothing Lawang Sewu from a geometric perspective. Journal of Mathematics Education (Kudus), 2(1), 87-100.

Palupi, Indrayani Nur. (2012). Fashion Design

Prabowo, F. (2017). History of the Nederlands-Indische Spoorweg (NIS) Office in Semarang. Seminar of the Indonesian Built Environment Researchers Association, A505– A510. <https://doi.org/10.32315/sem.1.a505>

Prihatini, T., Kesejahteraan, A., Akk, S. ", & Abstrak, ". (n.d.). THE ART OF EMBROIDERY (Vol. 5, Issue 1).

Putri, D. M., & Anas, B. (2012). Application of Stained Glass Ornaments to Casual Clothing With Digital Print and Embroidery Techniques. Craft, 1(1), 241550.

Rajendran, S. D., Wahab, S. N., & Yeap, S. P. (2020). Design of a smart safety vest incorporated with metal detector kits for enhanced personal protection. Safety and health at work, 11(4), 537-542.

Santoso, I. (2012). GIVING LOCAL CHARACTERISTICS TO COLONIAL ARCHITECTURE THROUGH ORNAMENTS IN THE EARLY 20TH CENTURY. Dimensions: Journal of Architecture and Built Environment, 39(1), 37-50.

Singer, R. (2013). Fabric manipulation: 150 creative sewing techniques. David & Charles.

Suhersono, H. (2004). Floral and decorative embroidery designs. Gramedia Pustaka Utama.

Visit Jawa Tengah. (2021). Lawang Sewu Semarang Tourism and Its Long History Retrieved on May 24, 2024 from: <https://visitjawatengah.jatengprov.go.id/id/artikel/wisata-lawang-sewu-semarang-dan-sejarah-panjangnya>